

Anti-PD-1 hlgG4 Reference Antibody (Tislbio)

Product Information

Product Name Anti-PD-1 hlgG4 Reference Antibody (Tislbio)
Storage temp. Store at 2-8°C short term (1-2 weeks).Store at $\leq -20^{\circ}\text{C}$ long term. Avoid repeated freeze-thaw.

Catalog# / Size GM-86861MAB-1mg / 1 mg
GM-86861MAB-5mg / 5 mg
GM-86861MAB-25mg / 25 mg
GM-86861MAB-50mg / 50 mg
GM-86861MAB-100mg / 100 mg

Antibody Information

Expression System CHO
Aggregation < 5% as determined by SEC-HPLC
Purity > 95% as determined by SDS-PAGE
Endotoxin < 1 EU/mg, determined by LAL gel clotting assay
Sterility 0.2 μm Filtered
Target PD-1
Clone Tislelizumab
Alternative Names CD279, PD-1, PDCD1, SLEB2, hPD-1, hPD-I, hSLE1
Source/Isotype Human IgG4 (S228P, E233P/F234V,L235A/D265A), Kappa
Application /

Description The programmed cell death 1 protein (PD-1, PDCD1, CD279) is a member of the CD28 family of immunoreceptors that regulate T cell activation and immune responses. The PD-1 protein contains an extracellular Ig V domain, a transmembrane domain, and a cytoplasmic tail that includes an immunoreceptor tyrosine-based inhibitory motif (ITIM) and an immunoreceptor tyrosine-based switch motif (ITSM). PD-1 is activated by the cell surface ligands PD-L1 and PD-L2. Upon activation, PD-1 ITIM and ITSM phosphorylation leads to the recruitment of the protein tyrosine phosphatases SHP-1 and SHP-2, which suppress TCR signaling. In addition to activated T-cells, PD-1 is expressed in activated B-cells and monocytes, although its function in these cell types has not been fully characterized. The PD-1 pathway plays an important role in immune tolerance; however, research studies show that cancer cells often adopt this pathway to escape immune surveillance. Consequently, blockade of PD-1 and its ligands is proving to be a sound strategy for neoplastic intervention.

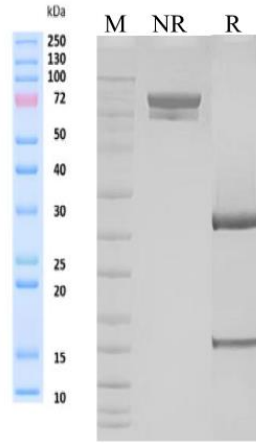
Version:3.1

Formulation

phosphate-buffered solution, pH 7.4.

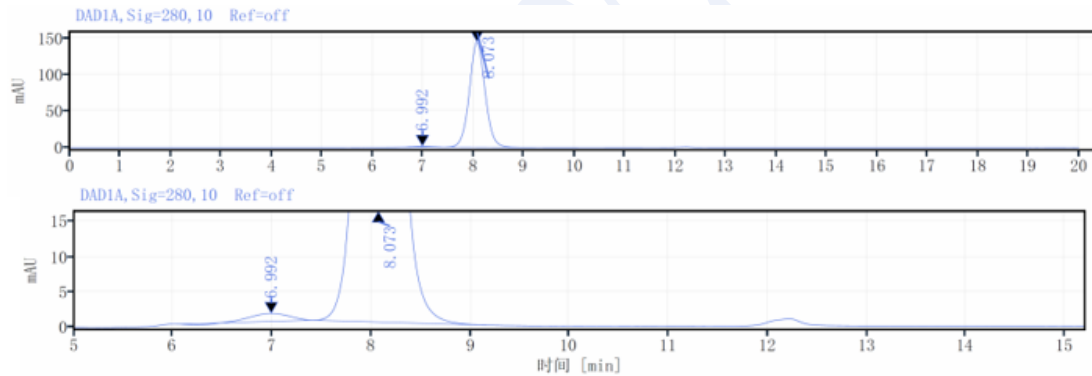
Data Examples

SDS-PAGE



On SDS-PAGE under reducing (R)/non-reducing(N-R) condition. The gel was stained overnight with Coomassie Blue. The purity of the protein is greater than 95%.

SEC-HPLC



The purity of this product is more than 95% verified by SEC-HPLC